

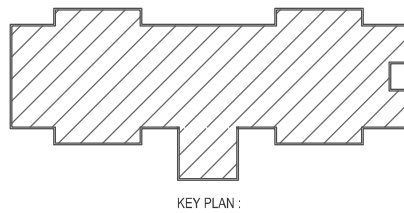
FOR NOTES AND SPECIFICATION REFER  
DRAWING NO. NC/STR/N4/JO8.NO/2022(V)/GTTC- SINDHANOOR/GN&GD/01&01A

**NOTES-CAMBER**

- 1) SHUTTERING SHALL BE LIFTED AT THE CENTER OF SIMPLE/ CONTINUOUS SPANS AND FREE END OF CANTILEVERS AS PER DRAWINGS.
- a) FREE END OF CANTILEVERS = 15 mm.
- b) CENTER OF CAMBER FOR BEAMS  
5m to 7m SPAN = 25mm  
7m to 9m SPAN = 35mm  
9m to 12m SPAN = 50mm  
12m to 17m SPAN = 75mm
- c) FOR SLABS  
4m to 5m SPAN = 15mm  
5m to 6m SPAN = 20mm  
6m to 7m SPAN = 25mm
- 2) USE PIN RODS OF SECOND LAYER AND THIRD LAYER REINFORCEMENT IN BEAMS TO BE TIED WITH PIN RODS OF 20Y FOR 12/16/20MM BARS AND 25Y FOR 25/32MM BARS ONLY.
- 3) CHAIRS TO BE PROVIDED TO SUPPORT TOP REINFORCEMENT IN SLABS USING SUITABLE DIA BARS OF 10MM / 12MM DIA AT 1.5M TO 2.0 M INTERVALS WITH APPROVAL OF ENGINEER/CONSULTANT.

**NOTE:**

- 1) GRADE OF CONCRETE-M25
- 2) GRADE OF STEEL-Fe550D
- 3) COVER FOR FLOOR BEAM - 30mm
- 4) COVER FOR FLOOR SLAB - 25mm



VERIFIED BY

DY. MANAGER-PROJECT  
GT&TC

MANAGER-PROJECT  
GT&TC

CLIENT :

GOVT. TOOL ROOM AND TRAINING CENTRE  
RAJANAGAR INDUSTRIAL ESTATE,  
BANGALORE-560010

PROJECT:

ESTABLISHMENT OF NEW GTTC CENTRE AT SINDHANOOR  
IN RAICHUR DISTRICT.

CONSULTANTS:

**NAVEEN CONSULTANTS**  
ARCHITECTS & ENGINEERING CONSULTANTS  
# 1398, 2nd floor, 2nd Cross, Ashoka Nagar  
(Behind B.M.S Engineering College Hostel)  
Bangalore - 560050.  
Ph-080-26620836 (o). Fax-26620836  
Email: naveenconsultants@gmail.com,  
naveenconsultants1@gmail.com

TITLE: BOYS HOSTEL

**DRAWING:**  
GROUND FLOOR ROOF SLAB AND  
BEAM FORMWORK LAYOUT

DRAWN BY : GSR DATE : 14/10/2025  
DESIGN BY : MV SCALE : NTS  
CHECKED BY: KVNS SHEET : A2

DWG NO: BOYS HOSTEL-06  
N C - N 4 - 2 0 2 2 ( V ) - G T T C - S I N D H A N O O R - R A I C H U R

RELEASED FOR: Preliminary Drawing, Tender Only, Information Only, For Approval, For Construction